

Introducing Tekmar's NEW Smart Heat Pump Control System

For High-End Residential & Light Commercial Applications

291

New Smart Heat Pump Control System

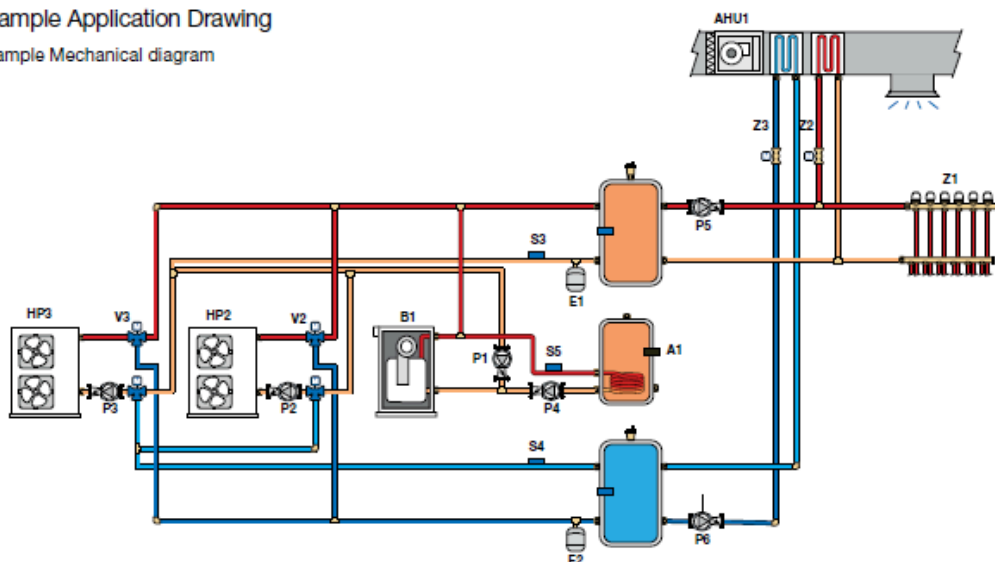
This integrated solution provides a complete package — including the controller, expansion unit, mixing expansion, and 6-way diverting valves.

Features:

- Pre-configured components and pre-insulated diverting valves reduce labor
 - Operates both 2- or 4-pipe systems, up to 16 heat sources
- Supports one backup boiler or boiler loop
- Simplifies configuration and troubleshooting with an intuitive Setup Wizard
- Supports dual-fuel systems and simultaneous heating/cooling
- Works with most heat pumps and thermostats
 - Offers floor cooling/indoor feedback with tekmarNet® thermostats
 - Enables remote monitoring and adjustments through Nexa connectivity

Sample Application Drawing

Sample Mechanical diagram





Smart Heat Pump Control 291

- Dual-fuel capability
- Setup & commissioning wizard
- Programmable schedule
- Outdoor reset
- Viewable on tekmarNet portal
- Connects with Nexa web and mobile app



Smart Heat Pump Expansion 291EXP

- Expands up to 16 heat pumps



Smart Mix Expansion 295

- Mix supply sensor
- Mix call
- Mix actuator
- Floating action
- 0-10 Vdc
- 4-20mA
- Variable speed injection
- Diverting valve
- Up to 3 mixing expansion modules



6-Way Diverting Valve Panel 731 & 732

- Packaged valve assembly with relay board
- Pre-insulated valve bodies
- Reversible logic
- 1" and 1 1/4" female NPT



Nexa Connectivity

- Remote access for maintenance and troubleshooting
- Real-time alerts
- Full maintenance transparency
- Historical data charting
- Searchable event log
- Event resolve
- No-cost access

Smart Heat Pump Control System Components at a Glance

Learn More

